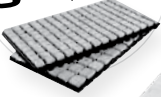


We recommend
grodan



X-STREAM HEAT

Designed for use with
Sun Blaster
lamps



Component List



1 x Base (Heated or unheated according to the model bought)



1 x Propagator Lid with adjustable air vents



1 x Variable heat controller (Only supplied if you have bought Variable Heated Control Model)

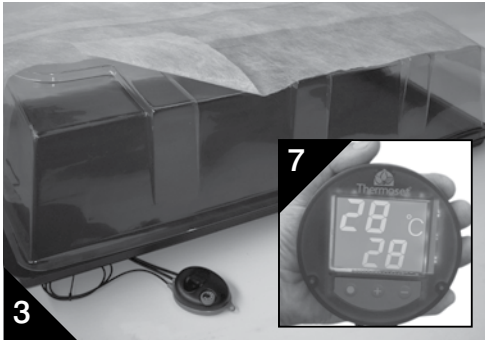
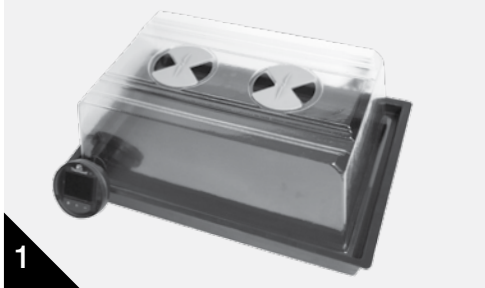
Safety Warning

- Take care when using 240 volt mains electricity, especially near water. The thermostatic control unit is spray and splash resistant but should never be allowed to stand in water. CE compliant. IPX2-spray resistant.
- The propagator base is sealed for life. It has been carefully manufactured to strict quality procedures.
- The element and the power cord are not repairable; if they are damaged in any way the unit should be discarded. CE compliant . IP44 – grit and spray resistant.
- This product is used for raising cuttings and seeds only. Excessive weight should not be placed on the base.

Assembly Instructions

X-STREAM HEAT

Please read all instructions carefully before assembling your propagator.



1. Place the propagator in an environment where there is sufficient light for your chosen plants. X-Stream heat is designed for use with Sunblaster lamps. Cuttings root faster in lower light conditions; seedlings prefer lower light for early growth, so place propagator in a semi shaded position. If using artificial light take advice from your lighting supplier.
2. Sow your seeds or cuttings as usual in trays or pots of compost or in Grodan SBS cubes, according to preference. Grodan is recommended as it is inert, clean and provides roots with easy access to oxygen.
3. If the outside temperature is very low and a high soil temperature is selected you may need to cover the X-Stream Heat to reduce heat loss.
4. When the seedlings have germinated. Open the vents gradually to decrease humidity. Once the humidity has dropped (when there are no water droplets on the lid anymore) prop open the lid to gradually increase ventilation, eventually remove the lid. Adjust the temperature setting, usually 2-3°C lower.
5. Make sure to avoid crowding of plants as this can lead to oxygen and light starvation. You will achieve better results if you leave just the healthier seedlings.
6. When true leaves (typical of the plant type) appear the plants are large enough to be handled and should be transplanted into pots or trays so that they have more space in which to develop. Stems are very fragile at this stage; take care to handle by the leaves
7. If you have a temperature controlled propagator, feed the sensor wire between the base and the lid of the X-Stream Heat Propagator.

This product is used for raising cuttings and seeds only. Excessive weight should not be placed on the base.

P0000213