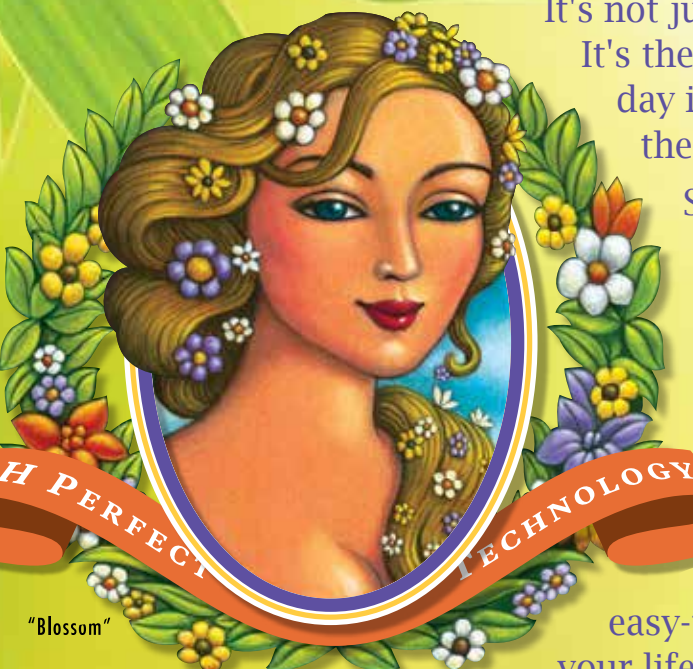


Say Goodbye to pH Balancing and Pens Forever & Hello to Your Best Harvest Yet

It's not just the up-front cost of the pens that's the problem. It's the maintenance. They end up costing an arm and a leg, day in and day out. They're a money pit. Not to mention the chemicals you use burn your skin.

So throw them out already. You won't need pH pens when you use pH Perfect® Sensi Grow and pH Perfect® Sensi Bloom A & B. Because Advanced Nutrients has developed this brain-dead easy-to-use two-part base nutrient formula, for each the vegetation and bloom phase, that keeps your pH in the perfect range for you. Without any measuring. Without any tampering.

You just pour in these easy-to-measure, easy-to-use base nutes. And then, you can get on with your life. Meanwhile, you happily watch your flowers bloom into monsters that bring in the big bucks.



Read what growers are saying about pH Perfect® Sensi Grow and Bloom A & B!



Jean Couture "I heart AN Sensi Grow and Bloom because they pH themselves!!! Amazing!!!"



Rachel Innes "I use the Sensi Grow and Bloom...it is worth every cent!!!"

"Gardener Jim" "I just want to start out by saying that I love the Sensi Grow. It has done the best Veg by far out of all the veg nutrients I have ever used. I have never been a big fan of multiple part formulas because I have always been more partial to the simplicity of a 1 part base. To be specific I was using the CNS 17 because it was cheap and easy but when I switched to Sensi Grow I was blown away by the increase in speed that my plants grew. I have tried a number of bases over the years and I have never seen a veg like a Sensi Grow veg. Also, I thought I would be sacrificing ease of use with the better results but I was wrong. Using a 2 part hasn't affected my routine at all and in fact, now I use the feed chart they provide on there web site to tell me exactly what to mix up and when and that takes all the guess work out of it completely. With that, its actually easier then using my 1 part from before."

SENSI GROW
pH Perfect Technology
SENSI BLOOM

The technology is called "pH Perfect"

And our scientists are very proud of it. They ought to be. As long as you're using pH Perfect products, you don't need to measure or alter anything to stay within the perfect pH range. Which means you can stop suffering those dreadful pH pens altogether. (Something to keep in mind, if you use supplements like bloom boosters without pH technology, you'll disturb the balance of your pH.)

To grow to their full potential, your plants need 16 basic elements. Most growers are familiar with the big 3 - Nitrogen, Phosphorus and Potassium, often abbreviated "N-P-K" on fertilizer bags. But there are 13 more bases to cover. Here's how it happens in nature:

From the air, water and soil your plants get:

- Carbon (C)
- Hydrogen (H)
- Oxygen (O)
- Nitrogen (N)

From the soil and fertilizers your plants get:

- Phosphorus (P)
- Potassium (K)
- Calcium (Ca)
- Magnesium (M)
- Sulfur (S)
- Boron (B)
- Chlorine (Cl)
- Copper (Cu)
- Iron (Fe)
- Manganese (Mn)
- Molybdenum (Mo)
- Zinc (Zn)

Those are the 16 elements your plants need to grow to their full potential. And you need all of them to grow well.

But to really grow healthy, huge and heavy, your plants need the highest quality versions of each of these. And in the right amounts. That's where Sensi comes in.

pH Perfect Sensi Grow and Bloom have been meticulously crafted to give you the perfect amount of each of these 16 elements.

And in the highest quality form humanly possible. We use a process called chelation, as well as the highest quality surfactant, so your plants can absorb these elements effortlessly.

Chelation is like putting tiny hooks onto each of the molecules of these essential elements, so they are easy for your plants to grasp. And the surfactant (Wet Betty) relaxes the tension in the liquids of your growing medium so the nutrients can move freely. And, they're guaranteed to perform.

P.S. Some growers have reported that this two-part formula is even easier to use than a one-part formula, even without the benefit of pH Perfect® Technology.

Try Sensi for yourself. Either pH Perfect Sensi Grow, for your vegetation phase, or pH Perfect Sensi Bloom, for your bloom phase.

If you're not blown away with how easy it is to use, how well it balances your pH, and how effective it is at growing heavy, profitable flowers, return with proof of purchase for a full refund.

➔ **Visit your local hydro store and feel the Sensi difference for yourself today.**

advancednutrients.com/SensiGB

